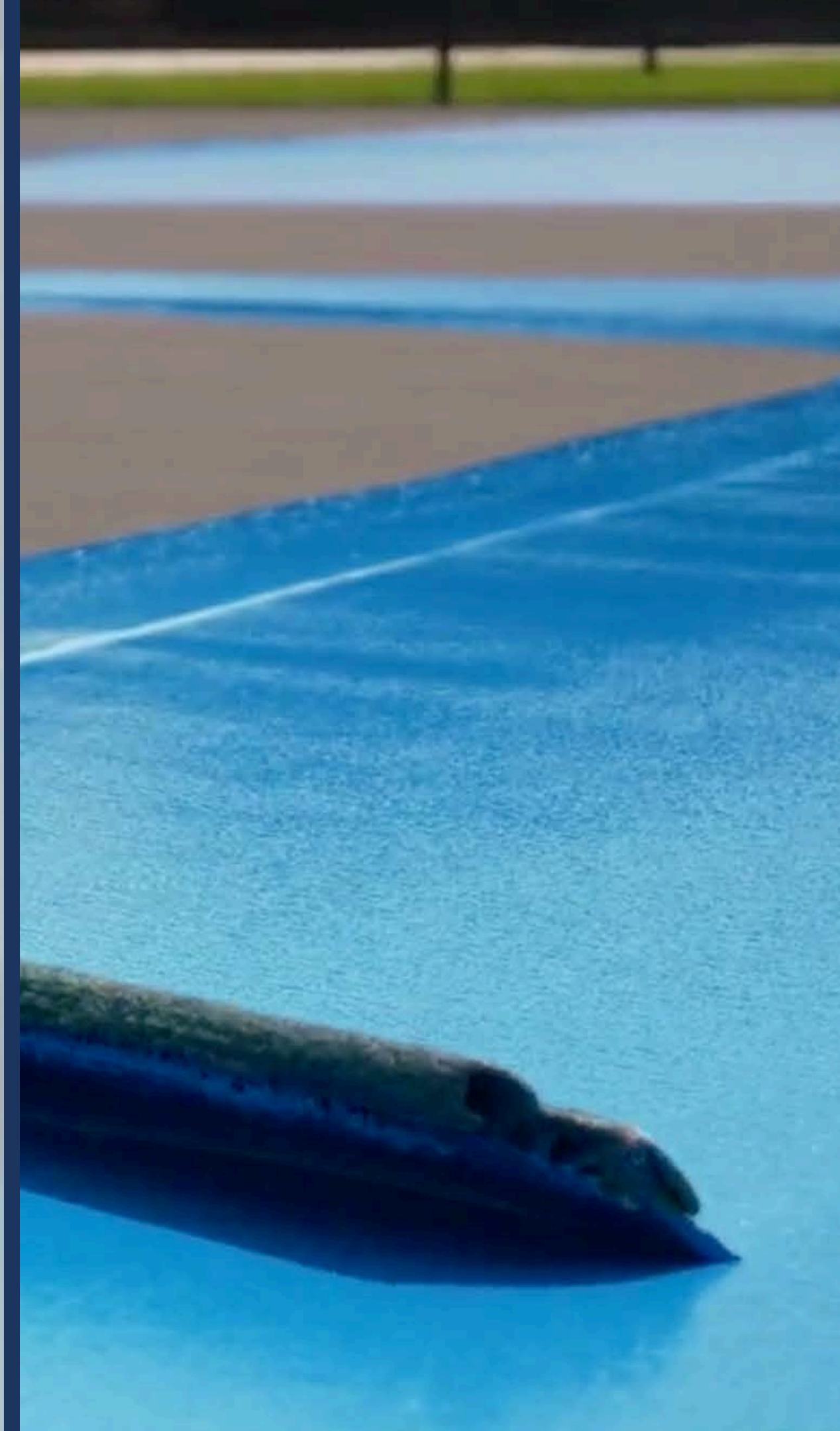




**SURFACES THAT PERFORM.  
SOLUTIONS THAT GO FURTHER.**

**| ATSPORTS.COM**



# ABOUT AT SPORTS

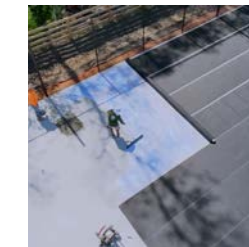
Since 1995, AT Sports has been a leading manufacturer of high-performance, durable sports surfacing solutions.

We specialize in engineering innovative products that ensure every game is played on the best possible foundation.

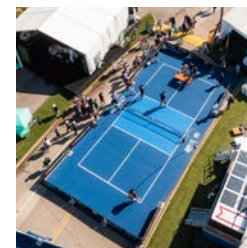
## PRODUCTS FOR ANY COURT PROJECT



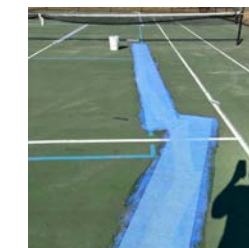
**ACRYTECH**  
SPORTS COATINGS



**CUSHION X**  
CUSHION SPORTS SURFACES



**ROLLY**  
PORTABLE SPORTS SURFACES



**FAULTLINE**  
CRACK REPAIR

Member of the  
**ITF**  
Foundation



OFFICIAL SURFACE  
**INTENNSE**



189





**CUSHION**  
PICKLEBALL COURTS

**CIBC**  
VIP Lounge

OFFICIAL SURFACE



PICKLEBALL TOUR

Since 2020

Donald Young  
AT Sports Sponsored Athlete

Meghan Dizon-Sheehan  
AT Sports Sponsored Athlete

# ACRYTECH

SPORTS COATINGS

DIVISION OF  
**AT**  
SPORTS

**OUR ACRYTECH LINE OF PRODUCTS FEATURE TOP-OF-THE-LINE  
SPORTS SURFACE COATINGS AND MATERIALS**



**COATINGS**



**PRIMERS & SEALERS**



**& MUCH MORE**

# BUILT TO LAST, DESIGNED TO PERFORM

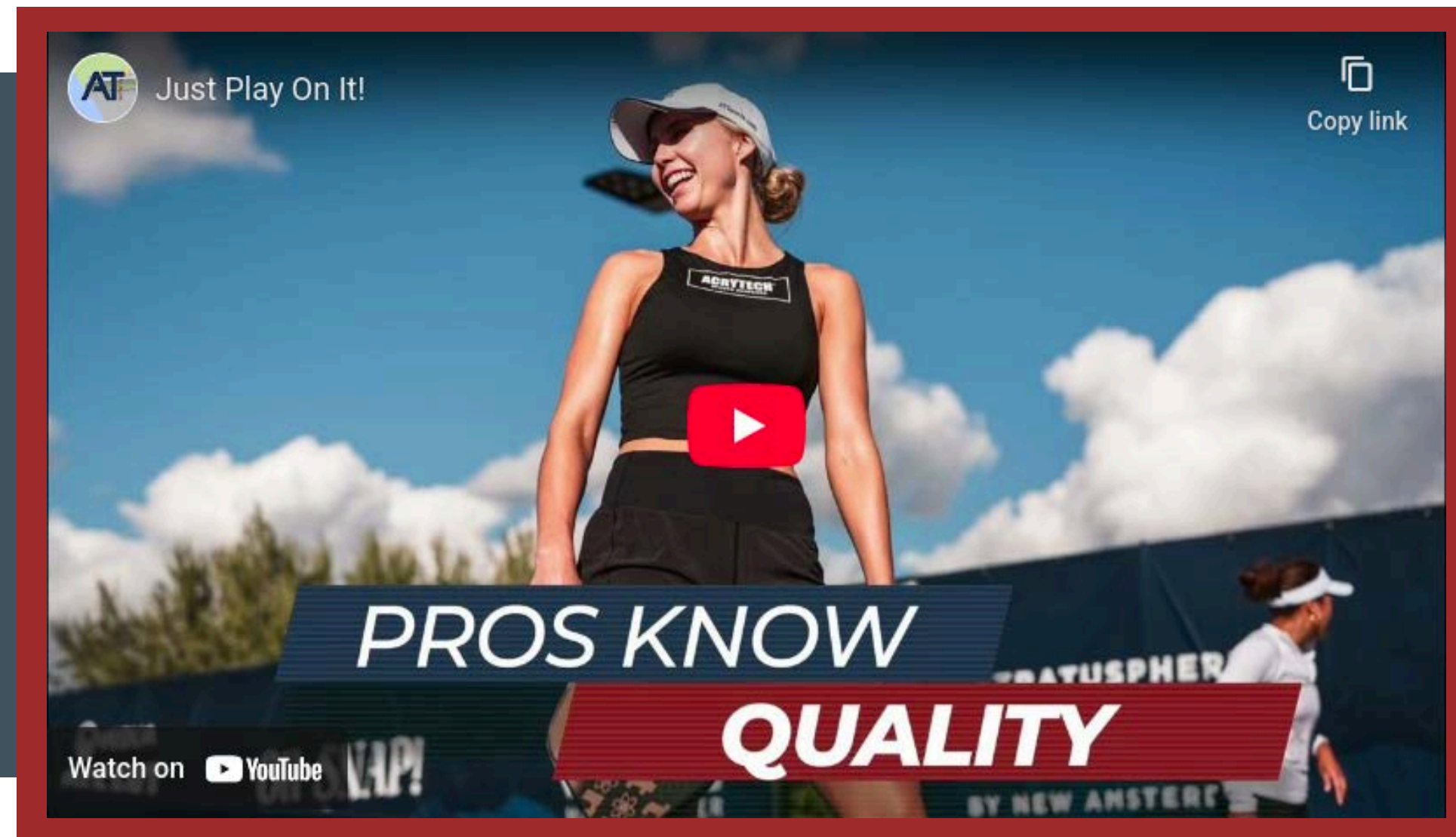
**ACRYTECH**  
SPORTS COATINGS

## ULTRA-DURABLE & WEATHER-RESISTANT

Resists surface wear over time. Its flexible formulation maintain vibrant color & structural integrity season after season

## INSTALLER-FRIENDLY & COST EFFICIENT

Comes in concentrated form for flexible mixing and Smooth application with reliable coverage



## CONSISTENT PLAYABILITY

Provides balanced texture and traction, delivering optimal ball bounce, spin control, and foot grip

## ECO-CONSCIOUS & PLAYER-SAFE

Water-based, low-VOC formula contains no hazardous materials like lead, asbestos, or PCBs

AT AT SPORTS, WE BELIEVE COLOR IS MORE THAN JUST A DESIGN CHOICE—**IT'S AN EXPERIENCE.**  
OUR ADVANCED TECHNOLOGY ENSURES OUR COLORS STAY BRIGHT, VIVID, AND CONSISTENT.

### PLAYER'S CHOICE COLORS



### SPECIALTY COLORS



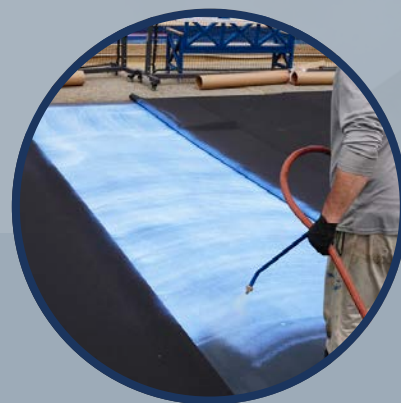
Digital displays can alter how colors appear from one screen to another. For true accuracy, please request a draw down from your installer or AT Sports Account Manager. Samples are provided free of charge; only shipping costs apply.



**CUSHIONX DELIVERS UNMATCHED IMPACT RESISTANCE AND EXCEPTIONAL DURABILITY, ENSURING THAT ATHLETES CAN ENJOY A SURFACE BUILT TO ENDURE THE DEMANDS OF INTENSE ACTIVITY.**



**CUSHION MATS**



**ADHESIVES & SEALERS**



**SQUEEGEE CUSHION**



**CUSHIONX EXTREME**

# WHERE PRECISION MEETS PERFORMANCE



## EXCEPTIONAL IMPACT RESISTANCE

Force reduction up to 15%  
compared to traditional  
surfaces

## MULTIPLE THICKNESS OPTIONS

Thickness options in 4mm,  
6mm and 8mm



## FASTER INSTALLATION

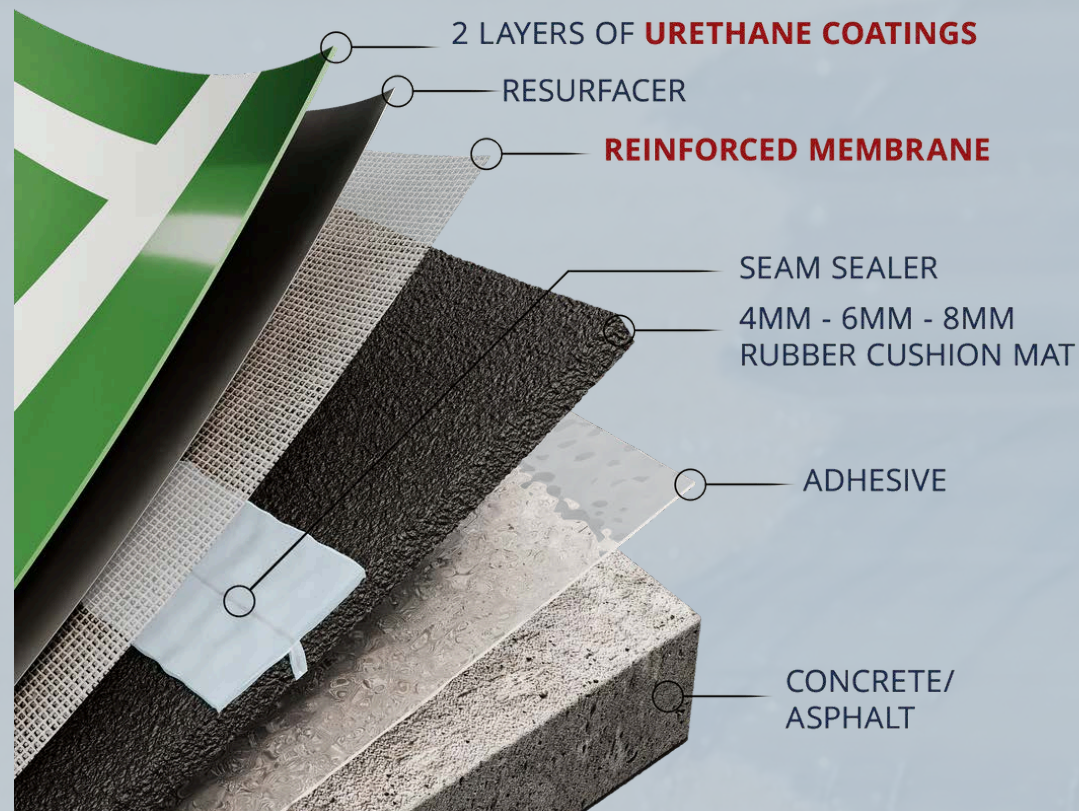
Delivers an installation  
speed that is three times  
faster than traditional  
methods

## MANUFACTURED BY AT SPORTS

A commitment that  
guarantees consistent  
quality and performance  
with every product

# THREE DISTINCT CUSHIONX COMPOSITION LEVELS HAVE BEEN EXPERTLY CRAFTED TO CATER TO DIVERSE AND SPECIALIZED USAGE NEEDS.

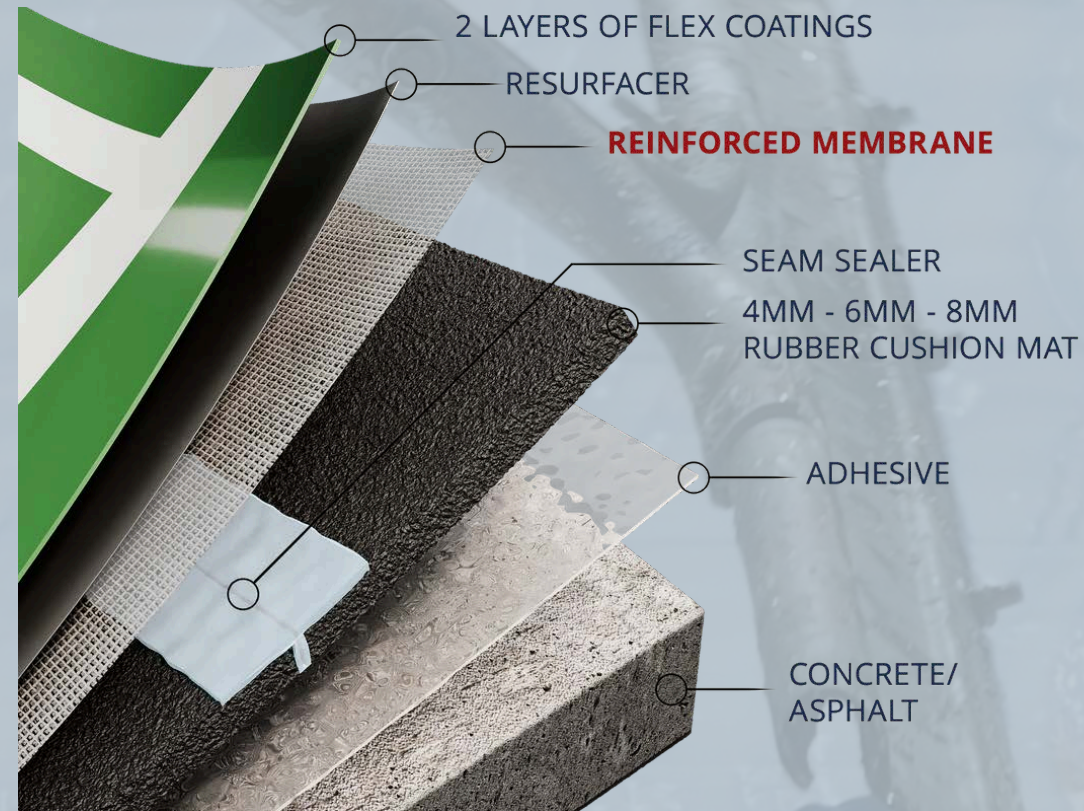
## LEVEL 3



### CLUB LEVEL & PRO TOURNAMENT USAGE

Designed for top-tier performance, Level 3 enhances Level 2 with three layers of urethane flex coatings. This construction withstands heavy use while offering exceptional impact absorption and comfort.

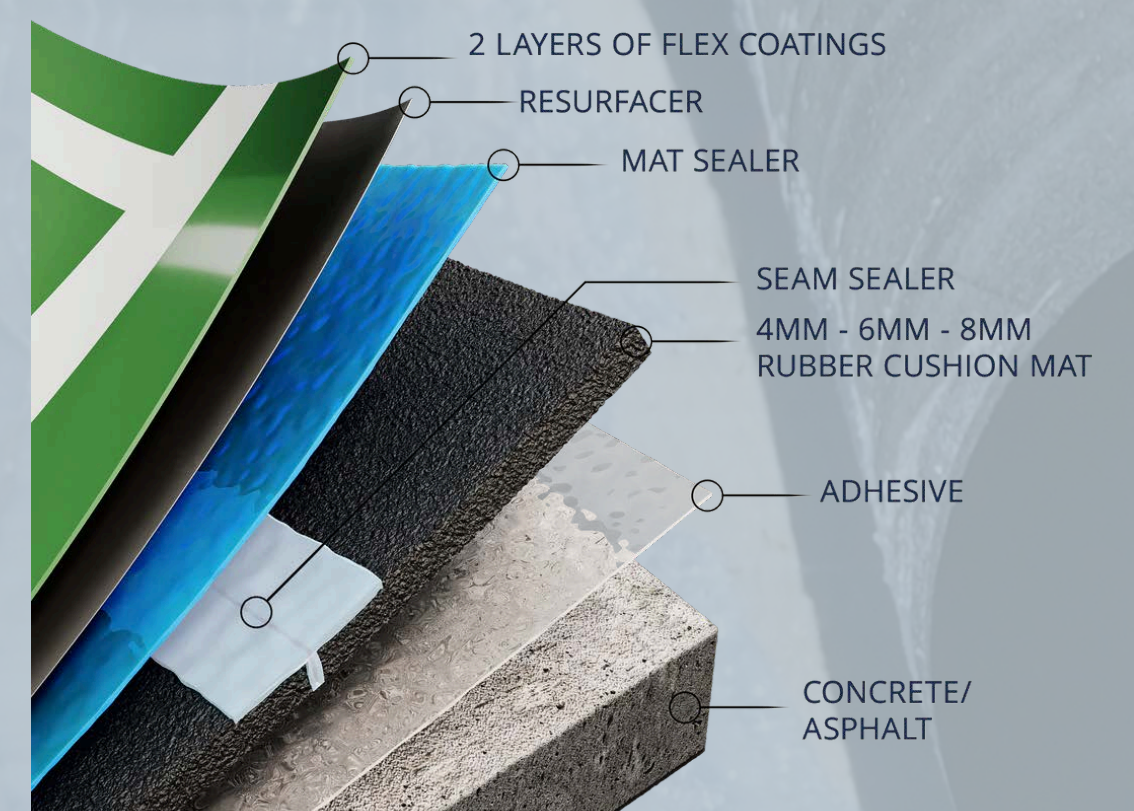
## LEVEL 2



### LIGHT & MODERATE COMMERCIAL USAGE

Crafted for superior resilience, Level 2 enhances the capabilities of Level 1 by incorporating an extra reinforced membrane layer to meet the demands of high-traffic environments.

## LEVEL 1



### RESIDENTIAL & LIGHT COMMERCIAL USAGE

Ideal for homes and light-use courts, Level 1 includes a 4mm, 6mm, or 8mm cushion mat with three layers of flexible coatings offering durability and comfort for recreational play.

# EXTREME DAMAGE MEETS EXTREME SOLUTIONS



## OVERLAY SYSTEM FOR DAMAGED COURTS

Free floating system engineered to be installed directly over cracked or deteriorated courts with no tear-out required.

## REINFORCED SEAM & PERIMETER BONDING

Seams are reinforced and the system is secured at the perimeter to manage movement and reduce stress.



## 6MM CUSHIONED PERFORMANCE LAYER

Optimized thickness for superior impact absorption, player comfort, and consistent ball response.

## 20-YEAR CRACK-FREE WARRANTY

A commitment that guarantees long-term durability backed by proven materials and design

# FAULTLINE

CRACK REPAIR

DIVISION OF  
**AT**  
SPORTS

OUR FAULTLINE LINE OF PRODUCTS FEATURE MULTIPLE SOLUTIONS FOR  
MAINTAINING THE QUALITY AND PERFORMANCE OF YOUR COURTS.



SPORT PATCH



CRACK FILLERS



SB GLUE



CRACK REPAIR KIT

# SEAMLESS REPAIRS WITH LASTING STRENGTH

## FAULTLINE

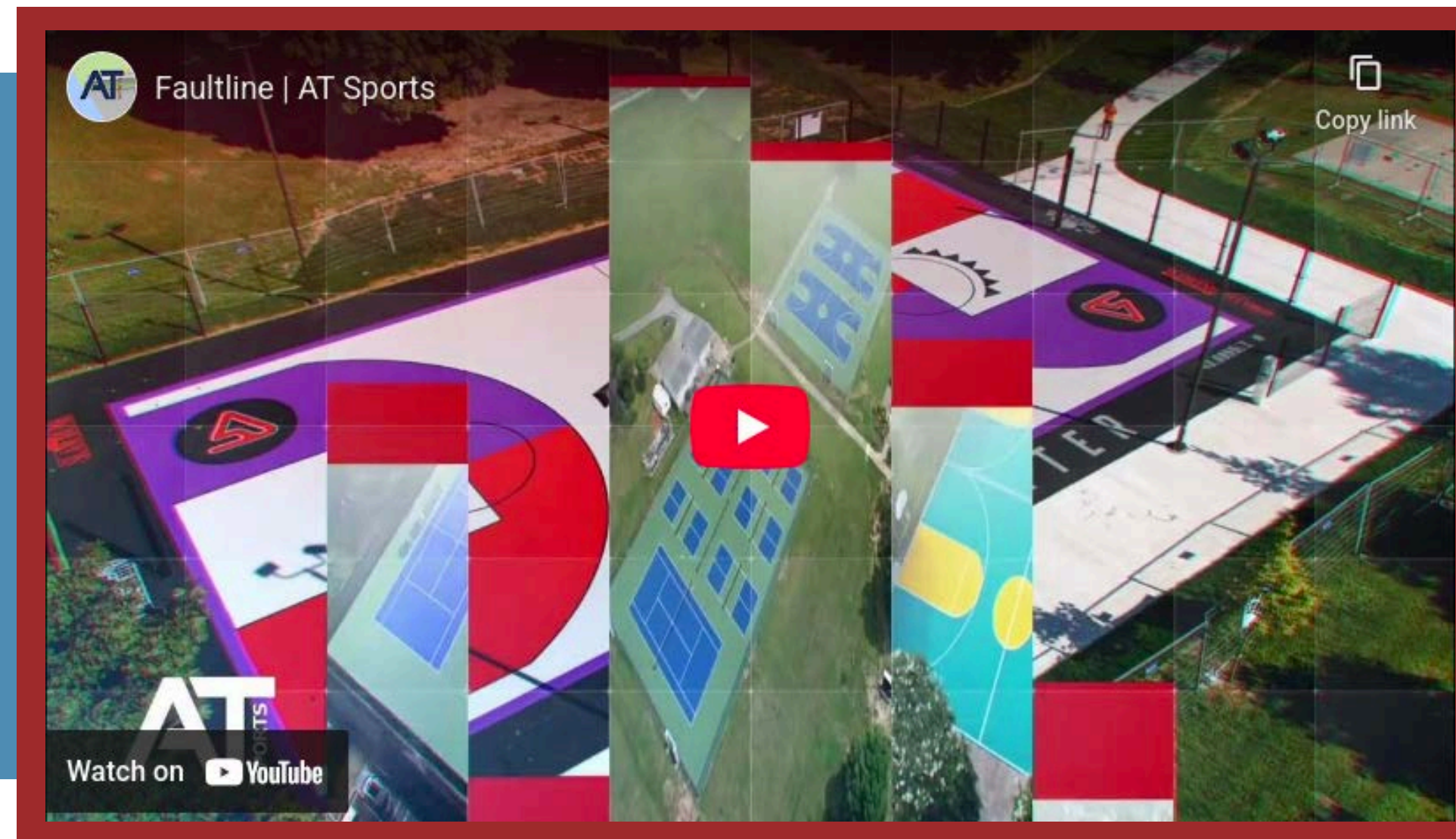
CRACK REPAIR

### FLEXIBLE, HIGH-BOND CRACK FILLER

Withstands movement and temperature shifts without failing or reopening

### PROPRIETARY CRACK REPAIR KIT

Thinnest, permanent, fully adhered system currently on the market



### LONG-LASTING DURABILITY

Formulated to resist cracking, shrinking, or delaminating over time - offering extended surface life with minimal maintenance

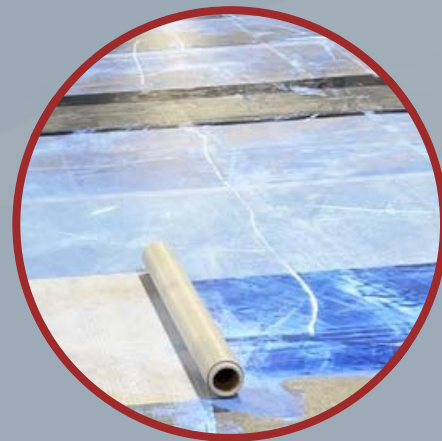
### WEATHER-RESISTANT & UV-STABLE

Withstands outdoor exposure and fluctuating conditions—ideal for courts in any climate.

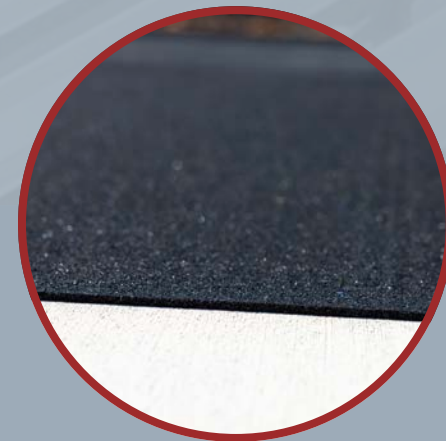
**ROLLX**  
PORTABLE SPORTS SURFACES

DIVISION OF  
**IAT**  
SPORTS

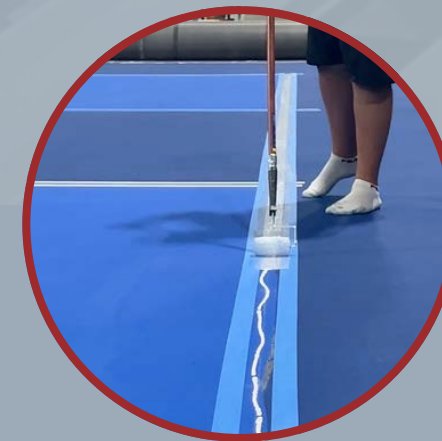
**ROLLX IS A PREFABRICATED SPORTS SURFACE THAT TRANSFORMS ANY FOUNDATIONAL SURFACE INTO A HIGH-PERFORMANCE PLAYING COURT**



**REINFORCED MEMBRANE**



**CUSHION MAT**



**FLEX COATINGS**

# DESIGNED FOR VERSATILITY AND CONVENIENCE

**ROLLX**  
PORTABLE SPORTS SURFACES

## PREMADE & CUSTOMIZABLE

A fully personalized sport surface featuring your choice of colors and logo(s) to meet your branding needs

## VERSATILITY

Engineered to perform in both indoor and outdoor settings and endorsed by the PPA



## EASY SETUP

With easy installation and removal, you can set up a professional-grade playing area in no time.

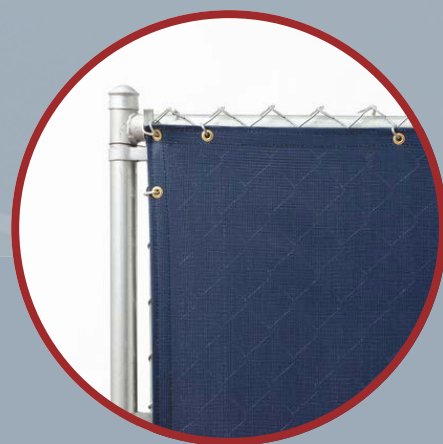
## PROPRIETARY REINFORCED OVERLAY

A unique reinforced overlay that can be applied to concrete, asphalt, or any level underlying surface



## WINDSCREENS

**OUR WINDSCREENS FEATURE CUSTOMIZABLE OPTIONS THAT IMPROVE PRIVACY, REDUCE WIND INTERFERENCE, & CREATE A PROFESSIONAL ATHLETIC ENVIRONMENT**



**8 OZ VINYL COATED POLYESTER**



**10 OZ VINYL**

# ENGINEERED TO BOOST ON-COURT PERFORMANCE



## FOR INDOOR & OUTDOOR

Our Windscreens are engineered to perform indoors and outdoors - perfect for gyms, stadiums, courts, and facility perimeters.

## BUILT TO LAST

Delivers long-term performance with reinforced construction and premium fabrics designed for strength.



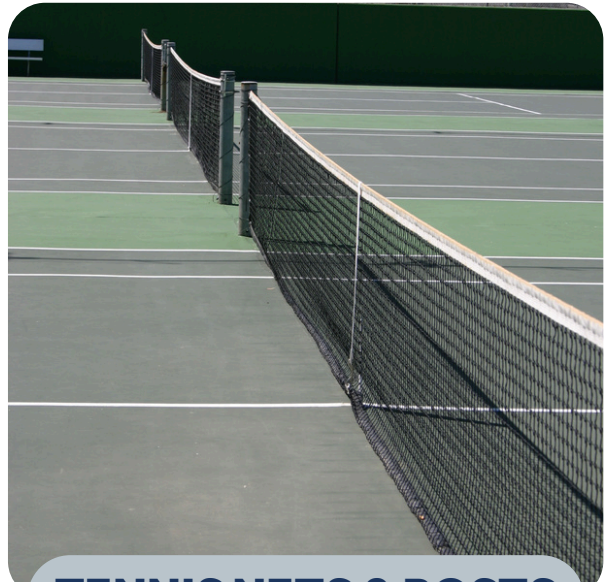
## EASY SETUP

Our Windscreens are designed for quick, hassle-free installation and removal whenever you need it.

## SEVERAL COLOR OPTIONS

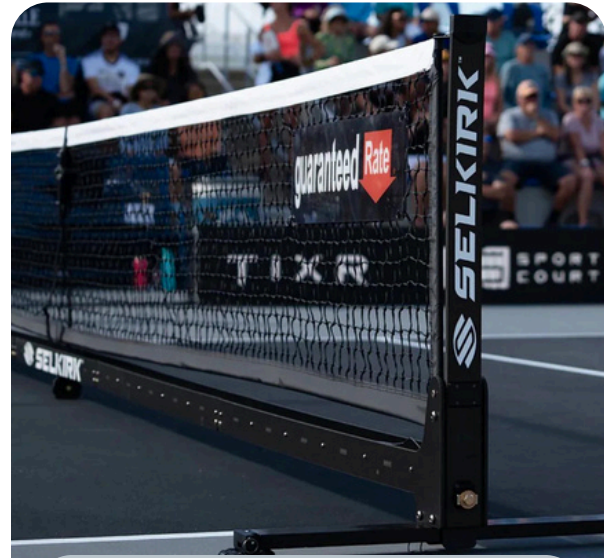
With multiple color options, our Windscreens let you tailor the look to your team, school, or facility.

# ACCESSORIES & INSTALLATION TOOLS



## TENNIS NETS & POSTS

Designed to meet standard specifications while delivering reliable tension and a crisp net profile suitable for competitive & recreational play



## PICKLEBALL NETS

Choose between Portable Pickleball Nets for quick setup, or Permanent Pickleball Net/Posts for a long-lasting, professional installation.



## SQUEEGEES

Built for professional surface prep and paint application, these tools ensure smooth coatings, sharp lines, and durable performance



## SCRAPERS & MIXERS

Engineered for surface prep and mixing tasks, these tools deliver precision, durability, and consistent results for professional coating applications.



## & MORE

Essential for storage, prep, and cleanup, these Tools ensure safe handling, surface protection, and reliable containment of coatings and materials.

PROUD DISTRIBUTOR

**DOMINATOR**

**SELKIRK™**

# BEYOND THE *SURFACE*



At AT Sports, our commitment to excellence goes far beyond the products...We're your trusted partner. Our team provides hands-on support to help you win projects, streamline installs, and deliver unmatched results to your clients.

## DESIGN & ESTIMATE SUPPORT

Design your dream court with our intuitive court designer, and plan your project using our paint calculator.

## SALES & MARKETING TOOLS

Access branded product sheets, system visuals, and co-branded assets to help you pitch and close more jobs.

## DEDICATED ACCOUNT MANAGER

Work with a court expert who understands your region, your timelines, and your needs—start to finish.

## PRODUCT & INSTALL GUIDANCE

Get technical documentation, system comparisons, and expert insight to align each project with the right surface.



**JUST PLAY. ON IT.**



# CONNECT WITH US



**Phone Number**

+61 7 3382 7260



12 Telford Circuit. Yatala. QLD. 4207



**Website**

[www.urbanturfsolutions.com.au](http://www.urbanturfsolutions.com.au)